

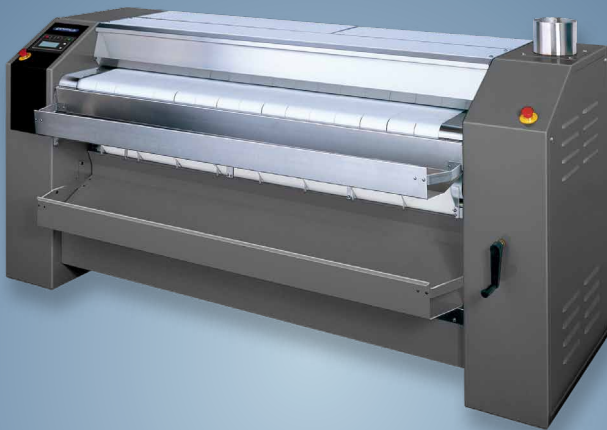
primus

laundry equipment

Xtreme
in innovation

Industrial Cylinder Heated Drying Ironers

I 50



FEATURES

- Large surface contact with linen over an angle of 300°
- High polished steel, thin cylinder
 - Reasonable price
 - Rapid response to temperature
 - Excellent thermal conductivity
- Finger protection and emergency button for more safety
- Durable Meta Aramid ironing belts
- Automatic cooldown
- Easy to operate microprocessor: 20 pre-set ironing programmes
- Indication of ironing speed and temperature
- Reverse mode possible
- Frequency controlled motor
- Easy to remove lint filters
- Space saving installation against the wall is possible: front return
- Electric, gas or steam heating
- Overheating check system (OCS) with 3 temperature sensors
- Ergonomic design

OPTIONS

- Coin operated version
- Central payment system operated version (CPS)
- Foot pedal for easy start and stop operation
- Chrome-plated cylinder for a better thermal conduction
- Pedal of insert table stop system
- SensoSpeed - auto adjustable ironing speed



ROBUST DESIGN



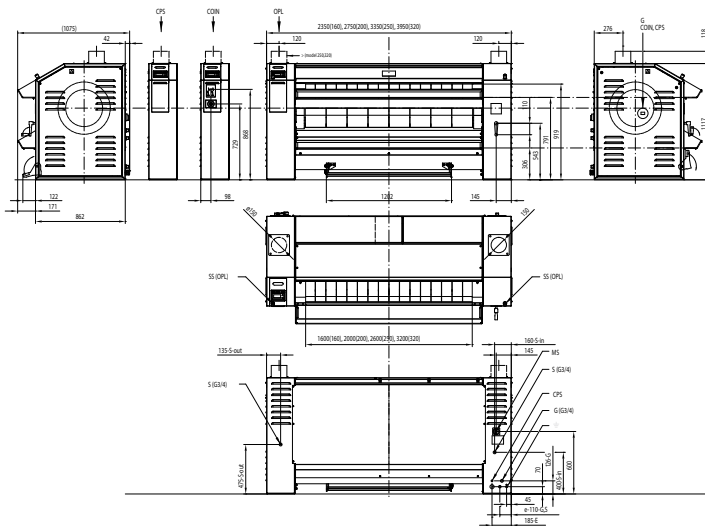
HIGH OUTPUT



LOW ENERGY
CONSUMPTION

TYPE		I 50-160	I 50-200	I 50-250	I 50-320
ROLLER DIAMETER	mm	500	500	500	500
USEFUL ROLLER LENGHT	mm	1600	2000	2600	3200
HEATING					
Electric heating	kW	32,4	37,2	54,0	64,8
Gas heating	kW	30	36	52	66
Steam heating	kg/h	36	49	68	88
MOTOR					
Roller motor	kW	0,37	0,37	0,37	0,37
Fan motor	kW	0,18/0,255	0,18/0,255	2x0,18/0,255	2x0,18/0,255
Total installed power					
Electric		33,2	38,0	55,2	66,0
Gas		0,7	0,7	0,9	0,9
Steam		0,7	0,7	0,9	0,9
Exhaust ventilation	mm	1x150	1x150	2x150	2x150
IRONING CAPACITY*					
Electrical & Gas heating	kg/h	65	80	95	120
Steam heating	kg/h	80	95	115	145
ROLLER SPEED	m/min.	1,5-8	1,5-8	1,5-8	1,5-8
ELECTRIC CONNECTION		380-415V 3AC+N 50/60 Hz, 208-240V 3AC 50/60 Hz 380-415V 3AC-N 50/60 Hz, 440V-480 3AC 60 Hz			
DIMENSIONS HxWxD	mm	1232x2350x1052	1232x2750x1052	1232x3350x1087	1232x3950x1087
TRANSPORT DATA					
Gross weight	kg	1120	1350	1500	1850
Net weight	kg	920	1150	1290	1590
Volume (crate packed)	m ³	4,24	4,97	6,00	7,03
Crate packing HxWxD	mm	1550x2490x1100	1550x2890x1100	1550x3490x1100	1550x4090x1100

* Tested in accordance of ISO 9398-1, The data concerning dimensions of machines include all extended parts



1. Coinmeter (only for version with coinmeter)
2. Control panel
3. Upper cover
4. Emergency stop
5. Manual drive of roller
6. Ironing belts
7. Exhaust ventilation (2 for 150-250,150-320)
8. Pedal used for starting/stopping belts' movement (only for version OPL)
9. Pedal microswitch (only for version OPL)
10. Coin container (only for coin version)
11. Insertion belts/feeding table
12. Cover of filter sieve
13. Name plate
14. Condense drain G 3/4" (only for version "S")
15. Main switch
16. Upper trough
17. Steam supply G 3/4" (only for version "S")
18. External protective connector
19. Lower trough
20. Bolts of side cover
21. Main power supply
22. Gas supply G 3/4" (only for version "G")
23. Electric power supply for heating system (version "E" only)

The company Primus preserves the right to change the machines and the specification in this leaflet at any time, without prior notice. Details and photographs are only for information and never binding.

www.primuslaundry.com

